



GREAT PLAINS
SAFETY AND HEALTH ORGANIZATION



**SAFETY...DO THE
RIGHT THING
AT THE RIGHT TIME**





WHO WE ARE

For over 20 years, Great Plains Safety & Health Organization (GPSHO) has provided businesses and organizations with safety solutions for today and tomorrow. From customized, onsite training to jobsite audits to OSHA abatement assistance, we're here for you. GPSHO is a 501c3 nonprofit membership organization dedicated to keeping you and your employees safe.



WHAT WE DO

OUR PURPOSE

We know that complying with safety regulations can be challenging—we're here to help. We are here to provide you with affordable, professional training, consulting and education to keep your employees safe.

OUR MISSION

GPSHO's mission is to help organizations comply with or exceed OSHA, community, and company safety and health requirements.

SAFETY COMPLIANCE MADE EASIER

Through annual training, audits and customized consulting to meet your needs, we make safety compliance a top value for your company. An effective safety and wellness program can provide numerous benefits for you, your employees and your company.





WHAT WE OFFER

GPSHO offers a wide variety of services to meet your safety needs. Contact us to discuss how we can help with safety at your workplace.

SAFETY RISK ASSESSMENT

- On-site walk-through inspections
- Development of site-specific procedures

RISK MANAGEMENT ASSESSMENT

- Loss control management
- Compliance assistance

CONSULTING

- Safety committees – goal setting/mission statements/vision of safety and health management
- OSHA compliance record keeping and documentation

CUSTOMIZED ON-SITE TRAINING

- Training designed for your specific needs
- Held at your location
- Includes hands-on exercises and demos completed by attendees
- Performance compliance and operational evaluation testing

TRAINING

- Open enrollment workshops
- Annual Safety & Wellness Summit
- Updates – new/changing safety and health regulations
- Annual OSHA refresher safety training workshops
- OSHA 1910 general industry 10 & 30 hour
- OSHA 1926 construction industry 10 & 30 hour
- Competent person training, LOTO, confined space, mobile equipment (Scissor lift, aerial lift, forklift, etc.)
- First aid and CPR certification
- Safety alerts and newsletters

INDUSTRIAL HYGIENE SERVICES

- Air samples
- Noise level monitoring

Go to www.gpsho.org for a full list of all of our services.

SAFETY & WELLNESS SUMMIT

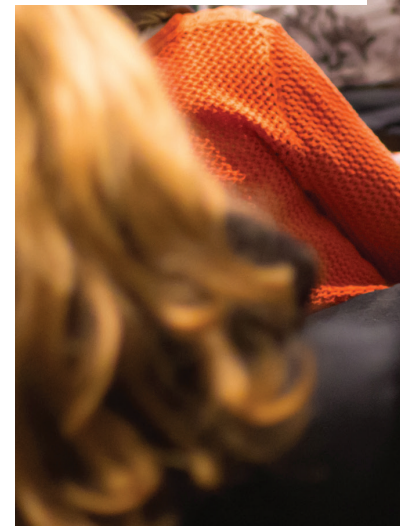
Each fall GPSHO gathers the best speakers on safety and wellness for the annual summit held in Kearney. Learn from top experts nationally, view the latest in safety and wellness products in the exhibit hall and network with others in your industry.



INDUSTRIES WE SERVE

Our expertise is built on years of experience in providing health and safety solutions for organizations of all sizes and industries. Safety is our business and we will help make it a top value for your company.

- General Industry
- Construction
- Ethanol
- Grain & Feed
- Healthcare
- Education





EMPLOYEE WELLBEING



MEMBERSHIP

In today's world, stress is at an all-time high, sleep is at an all-time low and many struggle to find the time to take care of themselves. In addition to your training program, the wellbeing of your employees also needs to be part of your safety program. Workers showing up to work tired and stressed are going to be distracted on the job and less productive. GPSHO can provide your employees with the tools needed to make lasting changes to improve overall wellbeing and be more present and productive on the job.

SLEEP

Learn why quality sleep is so important and how to make sure you get enough each night.

STRESS

Learn what stress is, what it does to our minds and bodies and how to develop skills to manage it at work and home.

NUTRITION

Learn how to eat healthy on the go and how the foods you eat can provide the fuel to get through the day.

MINDFULNESS

Learn what it is and how it can improve productivity, reduce stress, and anxiety and improve your overall wellbeing.

Your investment today will reap big benefits in the future for your employees and company. Membership includes the following:

- **New Member Audit:** Receive a free walk-through audit to access safety issues at your workplace.
- **Member Discounts:** Receive reduced rates on the Annual Safety & Wellness Summit, events, and activities.
- **On-Site Training:** As a member, you'll have first access to training dates.
- **Consulting:** Our safety specialists are just a phone call away to help address critical issues.
- **Promotional Items:** Receive monthly posters and weekly Safety Speaks (tool box talks) to promote safe behaviors at your workplace.
- **Awards Program:** Showcase your safety program this year. Winners are announced at the Annual Safety & Wellness Summit.
- **Resources:** Contact us to access free resources to train, educate and promote safety.



CONTACT US

For more information email
us at office@gpsho.org or
call 402-694-4774.

1312 L Street
Aurora, NE 68818
402-694-4774
office@gpsho.org



GREAT PLAINS
SAFETY AND HEALTH ORGANIZATION

